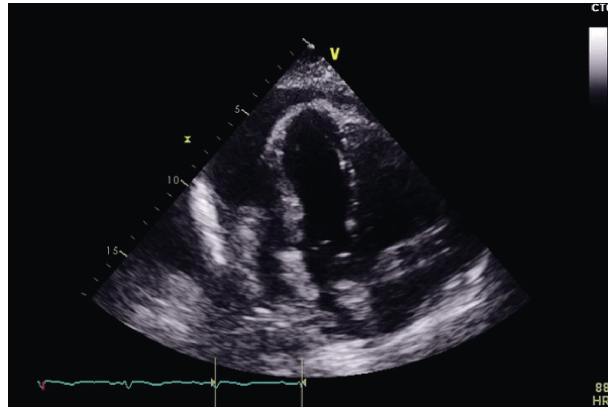
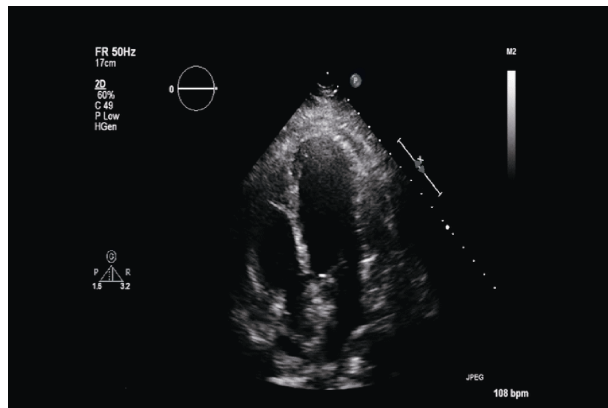


## Supplementary Materials



**Supplementary clip 1.** Initial echocardiogram 7 months ago revealed small pericardial effusion, elevated pulmonary artery systolic pressure (ePASP, 54.5 mmHg) with normal left and right ventricular function and no valvular abnormalities.



**Supplementary clip 2.** Repeated echocardiogram 7 months later revealed much larger pericardial effusion and significant pulmonary hypertension (ePASP 75.0 mmHg).